

1 How to Create a VPN Connection in MacOS


Create a VPN connection to the TU/e for MacOS

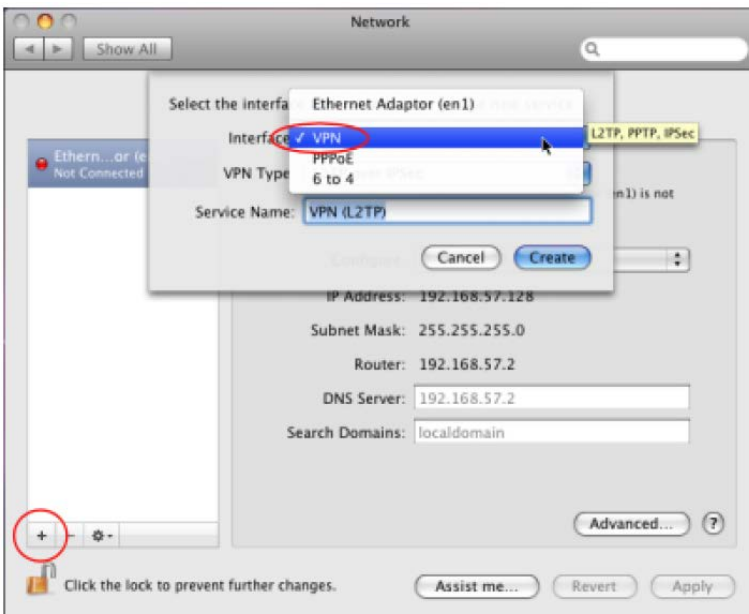
This *How To* will guide you in creating a VPN connection to the TU/e and accessing network shared folders. A VPN connection is required when accessing certain university resources when you are not on the TUE network itself.

Creating the TU/e VPN connection



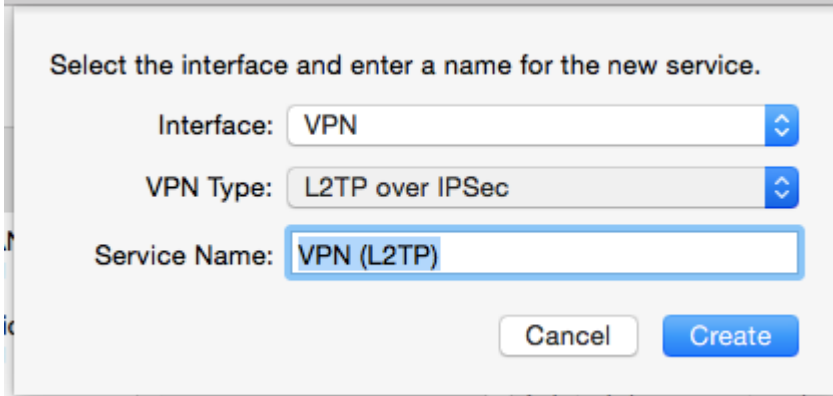
1. Open *System Preferences* and choose *Network*

2. Click the  button to add a network connection. Select as *interface type*: **VPN**



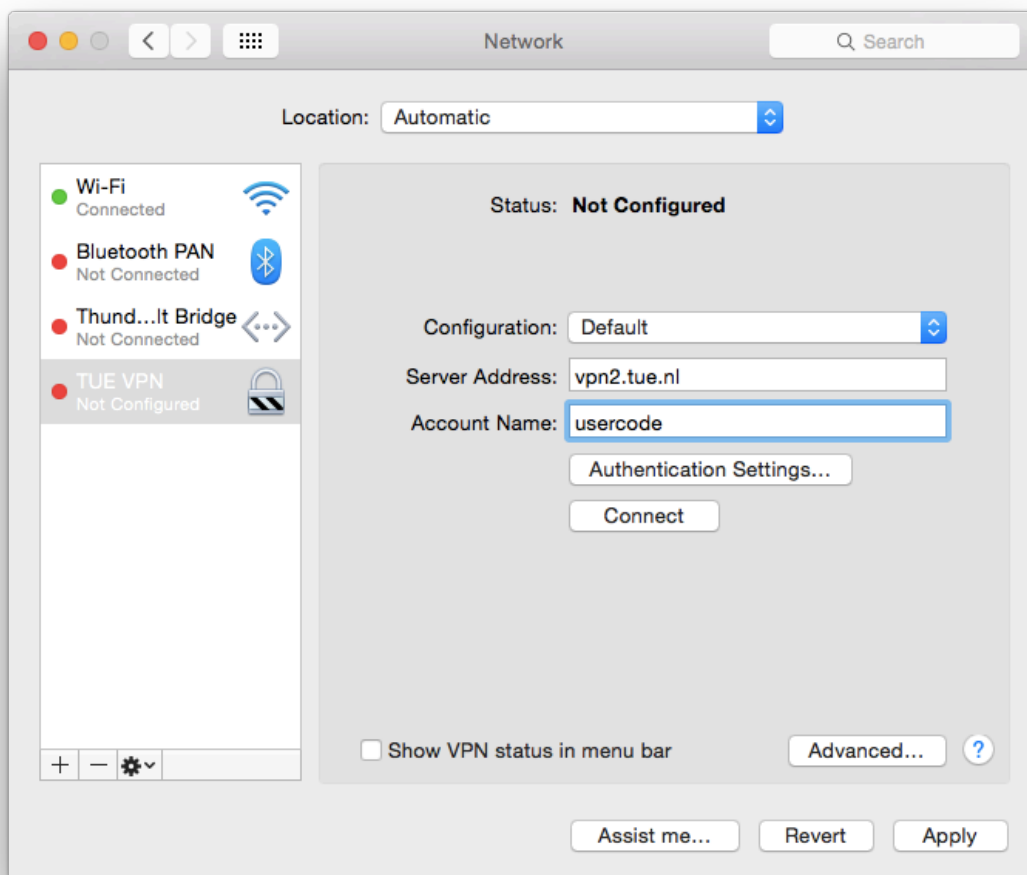
2 How to Create a VPN Connection in MacOS

3. Select as *VPN type*: **L2TP over IPSec**. Enter any name as *Service Name*, e.g. **TUE VPN**



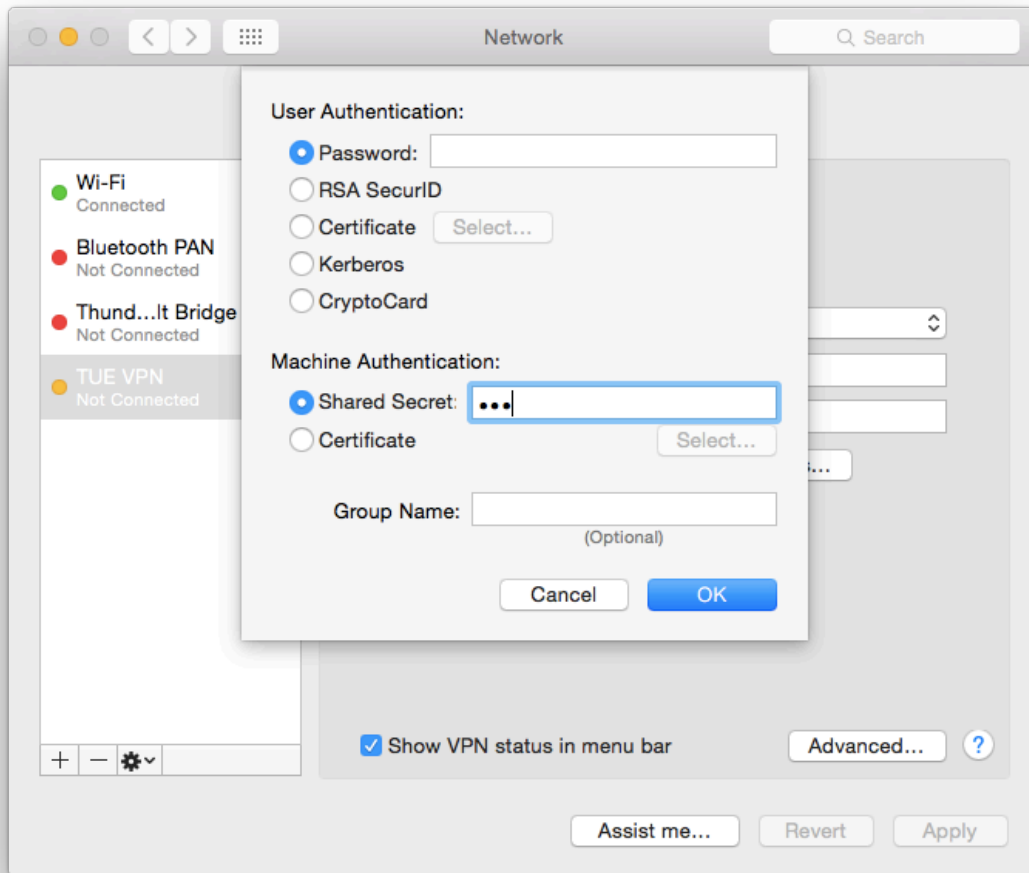
4. Click the *create* button.

5. Enter as *Server Address*: **vpn2.tue.nl** and behind *Account Name* your **TUe usercode**



3 How to Create a VPN Connection in MacOS

6. Click on **authentication settings** and fill in the Shared secret → *TUe* (capitals are mandatory)

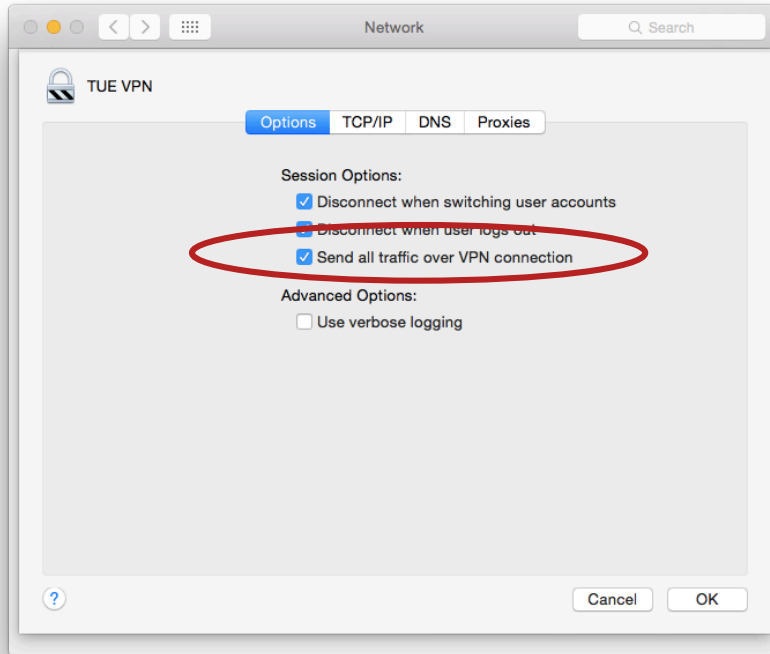


7. Optional: If you wish the connection always to remember your password, you can enter the password in the User Authentication section.

8. For OS 10.7 (Lion) select: *Show VPN status in menu bar*


Show VPN status in menu bar

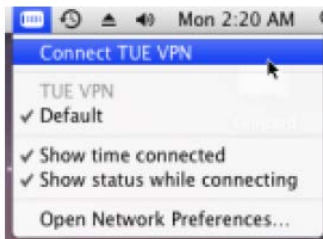
9. Click the *Advanced* button and choose *Options* from the upper bar. Be sure to select the option *Send all traffic over VPN connection*:



10. Click the *OK* and *Apply* buttons to finish. This concludes the initial VPN setup.

Activating the TU/e VPN connection

1. In the menu bar on the upper right, click on the new  icon:

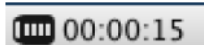


2. Click on *Connect (name of connection)*. The icon status will momentarily show the status *Connecting...* and *Authenticating...*

3. If you did not have chosen for entering your password during configuration, you will be asked to do so now:



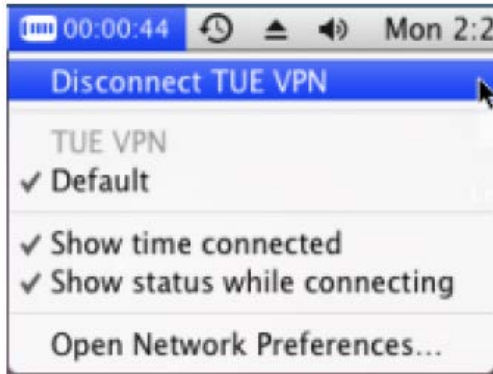
4. If the authentication is successful the icon now show the time connected:



5 How to Create a VPN Connection in MacOS

Disconnecting a VPN connection

1. Click the icon and select *Disconnect (connection name)*. That's all !



Note about this How To:
Mac operating systems are supported on a best effort base, The information in this *How To* is solely based on input from Mac Users. Do you have any improvements or more *How To*'s to share with us?