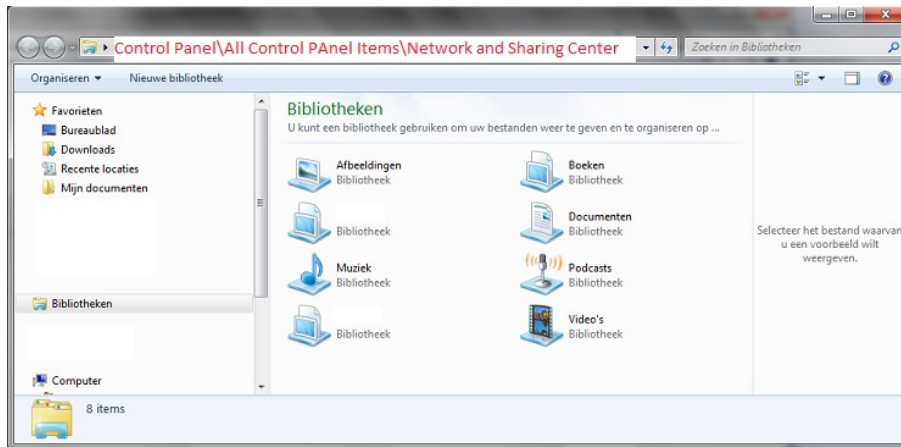


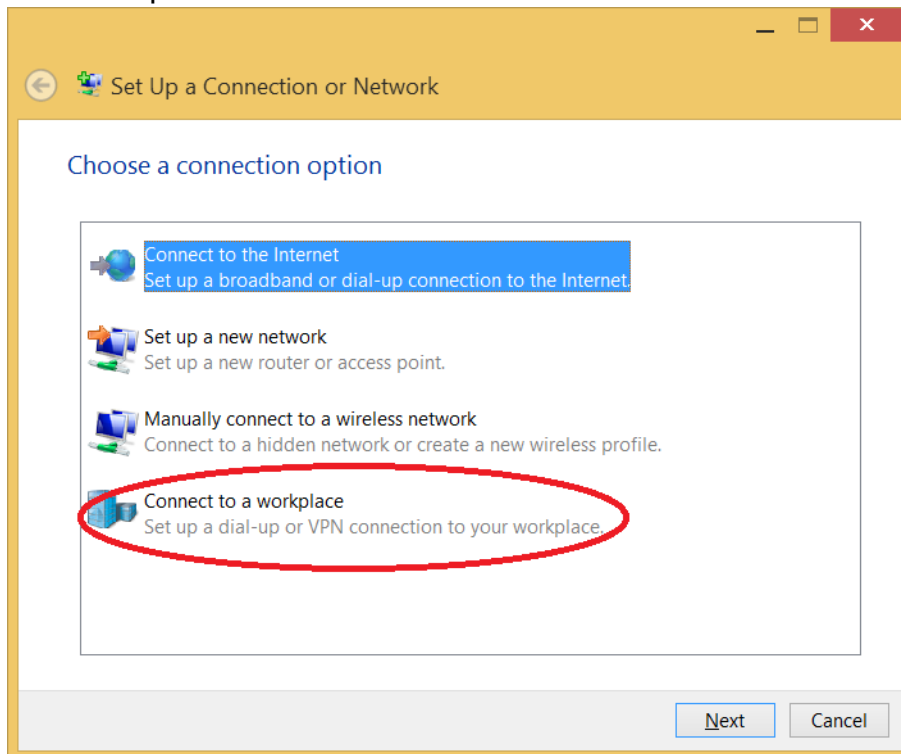
1 Handleiding voor het opzetten van een VPN verbinding met Windows 8

Open het 'Network and Sharing center'

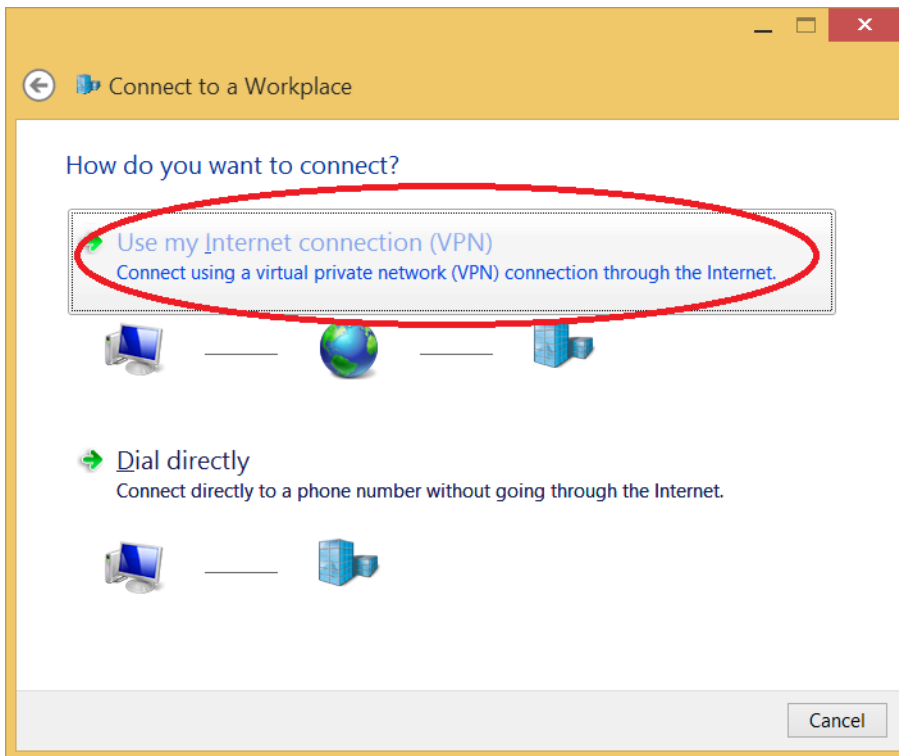
Klik op File Explorer



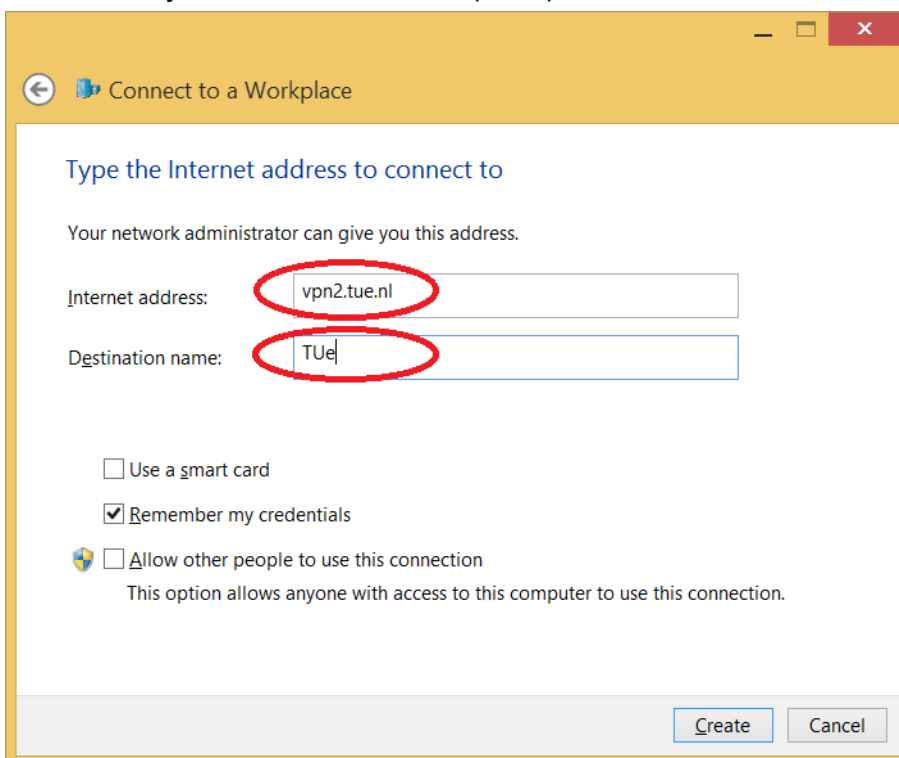
Vul in in de adresbalk: '**Control Panel\All Control Panel Items\Network and Sharing Center**'
Klik 'Set up a new connection or network'



Kies 'Connect to a workplace',



Klik 'Use my internet connection (VPN)'

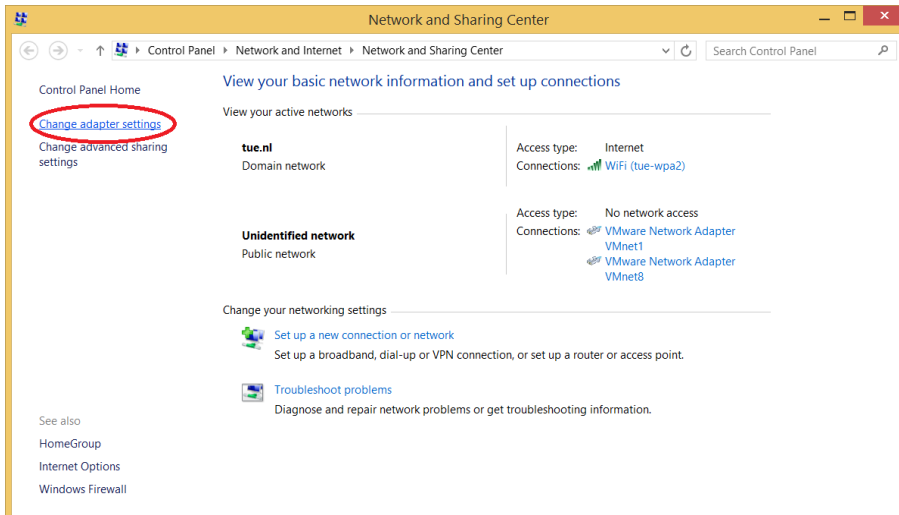


Vul in:

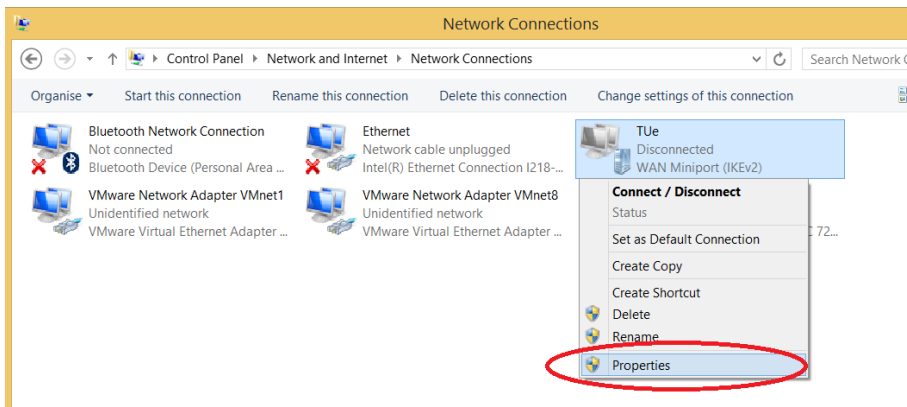
- Internet Address: vpn2.tue.nl;
- Destination Name: 'TUE'

Klik 'Create'.

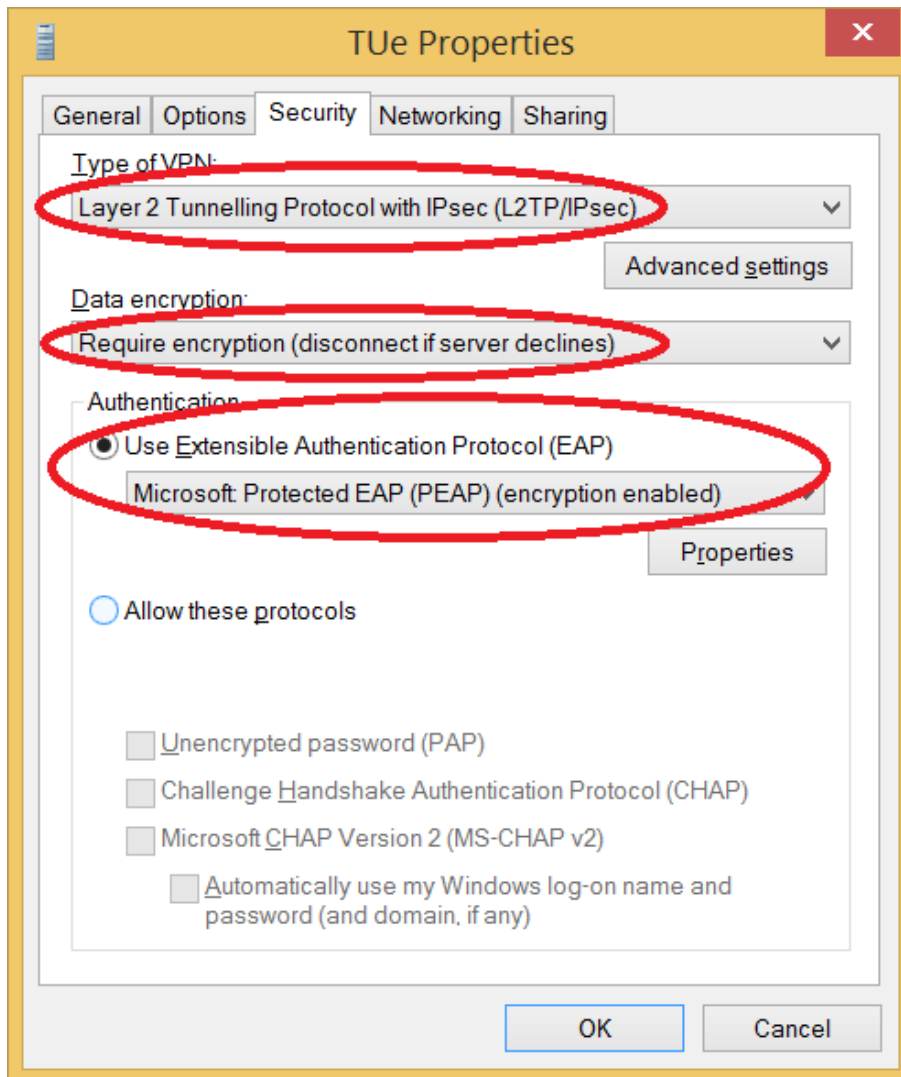
Ga terug naar het 'Network and Sharing center'



Klik 'Change adapter settings'.



Selecteer de VPN verbinding
Klik 'Properties'.



Klik tabblad '**Security**'

Selecteer bij 'Type of VPN': '**Layer 2 tunneling Protocol with IPsec (L2TP/IPsec)**'

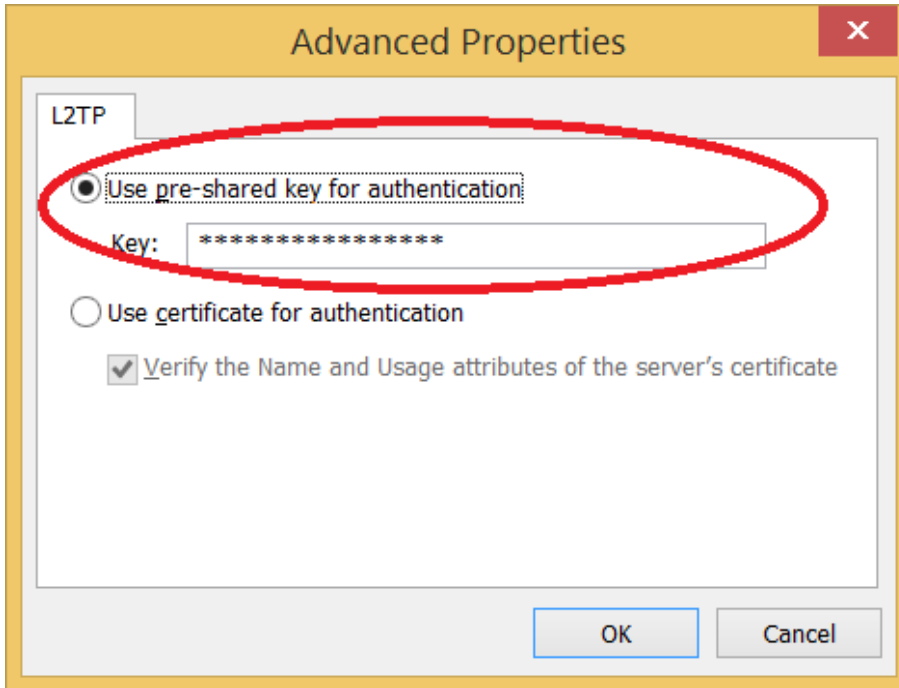
Selecteer bij 'Data encryption': '**Require encryption (disconnect if server declines)**'

Selecteer bij 'Authentication': '**Microsoft Protected EAP (PEAP) (encryption enabled)**'

Blijf in dit scherm!

5 Handleiding voor het opzetten van een VPN verbinding met Windows 8

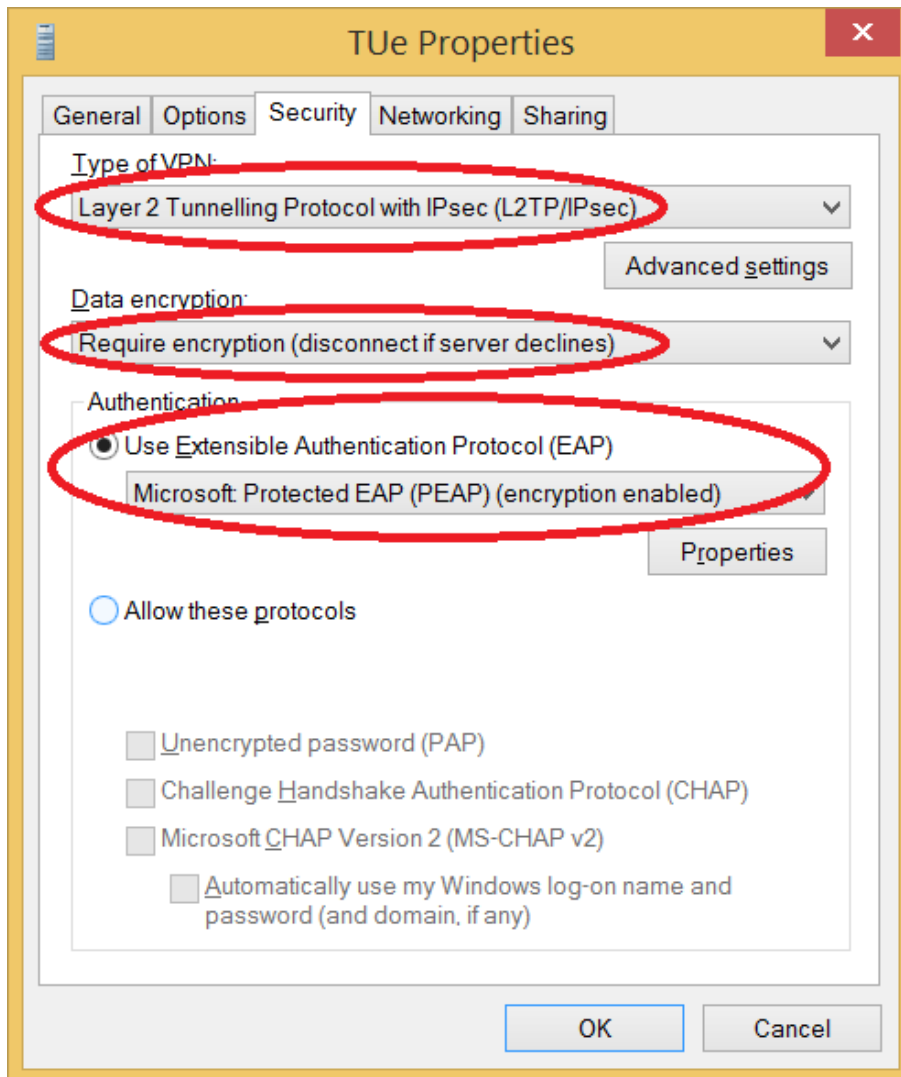
Klik 'Advanced settings'



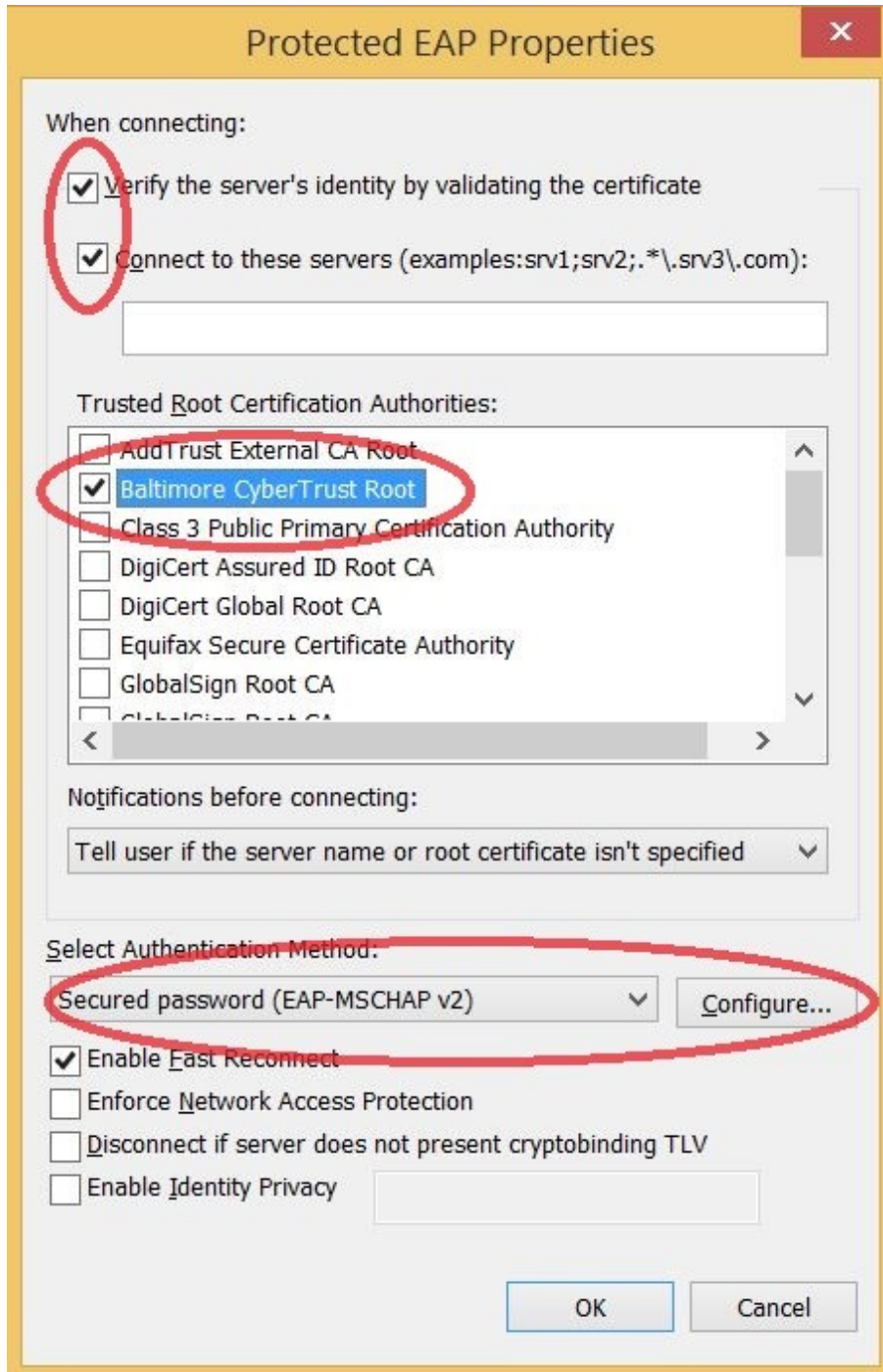
Vul in:

- Use preshared key for authentication: 'TUe'

Klik 'OK'.



Klik 'Properties',



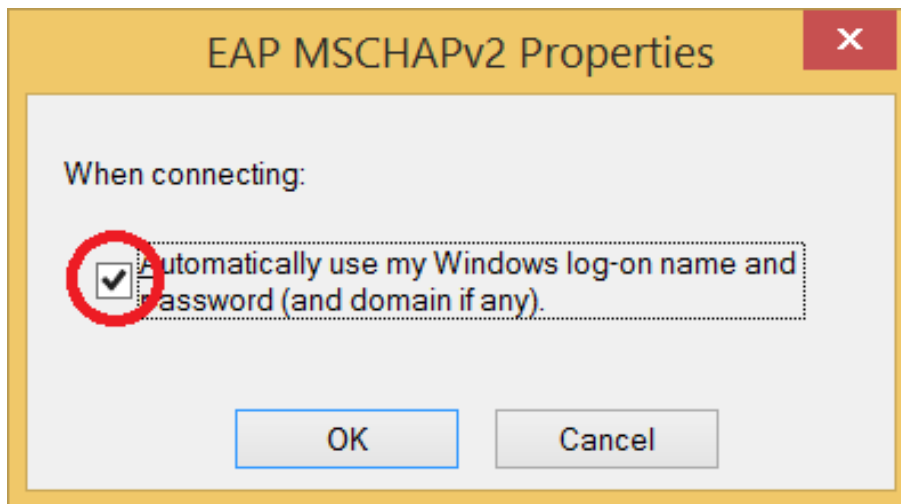
Vink aan bij 'When Connecting: 'Verify servers identity by validating the certificate'

Vink aan 'Connect to these servers:

Selecteer bij 'Trusted Root Certification Authorities: **'Baltimore CyberTrust Root'**

Selecteer bij 'Select Authentication Method: **'Secured password (EAP-MSCHAP v2)'**

Klik 'Configure'

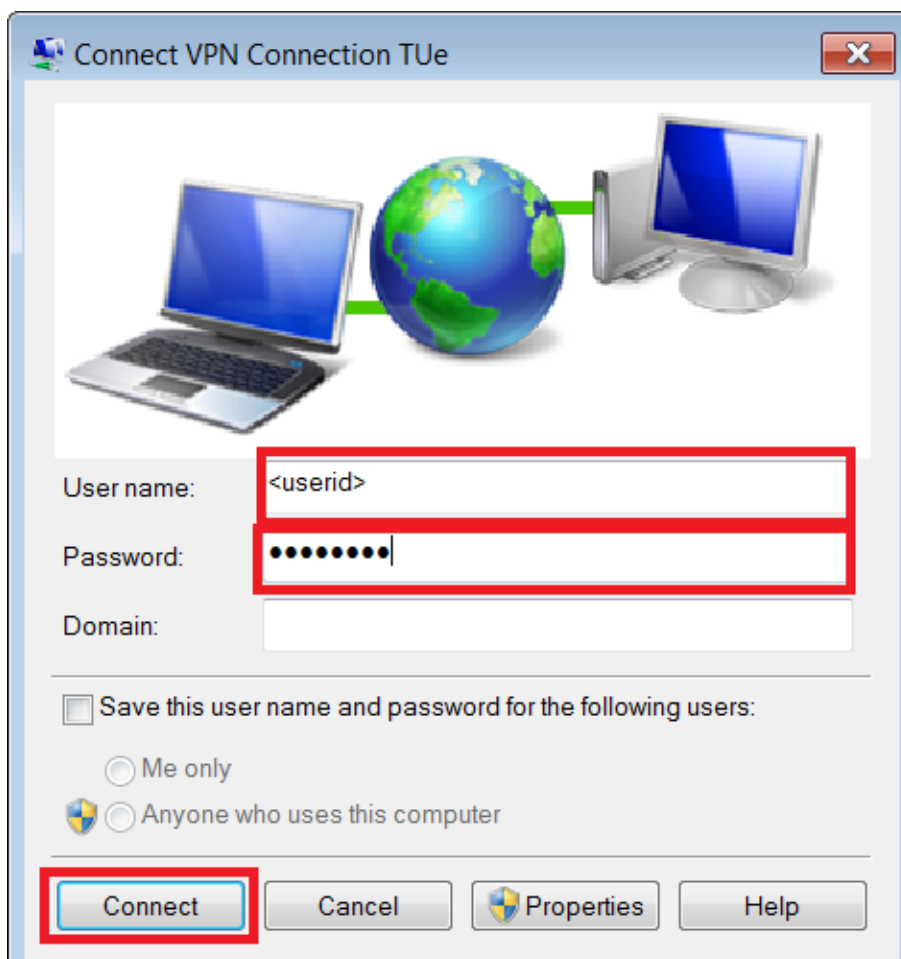


Klik 'OK'.

Kies of je wilt dat voor de VPN verbinding automatisch de windows usercode en password worden gebruikt. Dit werkt alleen als het systeem ook bekend is op het TU/e netwerk (Domein TUE)

1. **Zo ja, vink aan 'Automatically use my Windows logon name and password (and domain if any)'**
2. **Zo nee, vink uit 'Automatically use my Windows logon name and password (and domain if any)'**

Klik 'OK'.



Indien bovenstaand scherm niet verschijnt,



Klik **rechts**onder in de taakbalk
Selecteer 'TUe'
Klik '**Connect**'

A screenshot of the Windows Sign-in dialog box. The background is dark blue. At the top, the text 'Sign-in' is displayed in white. Below it is a white silhouette of a person's head and shoulders. There are two input fields: a white one labeled 'Username' and a grey one labeled 'Password'. Below the password field is the text 'Domain:'. At the bottom, there are two buttons: a green 'OK' button and a blue 'Cancel' button.

Vul in:

- 'Username' "TUE\loginname"
- 'Password': password

Klik 'OK'

De VPN verbinding met de TU/e is tot stand gekomen.

Hiermee heb je toegang tot [Network Schijven](#), Bibliotheek informatie, Corporate Systems en intranet.